

ECONOMIC INDICATORS

NEW SOUTH WALES

EMBARGO: 11:30AM (CANBERRA TIME) THURS 15 NOV 2001

CONTENTS

	<i>Page</i>
Notes	2
NSW overview.	3
Main features	4
List of tables and graphs	5
Population	6
Labour	7
Production	10
Building	11
Retail trade	12
New motor vehicle registrations	13
Tourism	14
Consumer and producer price indexes.	15
Finance	16
State Government finance	17
Investment.	18
International trade.	19

- For further information about these and related statistics, contact Jill Tomlinson on Sydney 02 9268 4123, or the National Information and Referral Service on 1300 135 070.

NOTES

FORTHCOMING ISSUES

ISSUE

ISSUE DATE

December 2001

18 December 2001

DATA NOTES

ABS statistical series are being impacted to varying degrees as a result of The New Tax System (TNTS), introduced in Australia from 1 July 2000. TNTS included the removal of Wholesale Sales Tax and the introduction of a Goods and Services Tax (GST), and as a result, a wide range of ABS data series will reflect significant immediate and subsequent impacts. For further information see Australian Economic Indicators, July 2000 (Cat. no. 1350.0).

GENERAL

This publication provides information on a wide range of economic indicators which are the latest available at the time of publication. In a number of cases, figures appearing in this summary are preliminary and are subject to revision in subsequent issues.

SEASONAL ADJUSTMENT AND TREND ESTIMATION

Seasonal adjustment is a means of removing the estimated effects of normal seasonal variation from a series so that the effects of other variations on that series can be more clearly recognised. This means that movements of seasonally adjusted estimates may not be reliable indicators of trend behaviour. Smoothing seasonally adjusted series produces a measure of the underlying trend by reducing the impact of the irregular component of the series. For an explanation of seasonal adjustment derivation, refer to the publication Seasonally Adjusted Indicators (Cat. no. 1308.0).

SYMBOLS AND OTHER USAGES

FOB free on board
kWh kilowatt hour
m million
n.a. not available
n.p. not available for publication but included in totals where applicable
n.y.a. not yet available
p preliminary
r figure or series revised since previous issue
. . not applicable
— nil or rounded to zero
— break in continuity of series (where a line is drawn across a column between two consecutive figures)

Gregory W. Bray
Regional Director
New South Wales

NSW OVERVIEW

EMPLOYMENT AND UNEMPLOYMENT

Employment in NSW in September 2001 was a seasonally adjusted figure of 3,054,600. The participation rate decreased by 0.7 percentage points from the previous month to 62.5%. The national participation rate was 63.5% in September 2001. Unemployment in NSW increased by 3.3% to a seasonally adjusted figure of 202,400 in September 2001. The unemployment rate in NSW was 6.2% while the national unemployment rate was 6.7%.

INDUSTRIAL DISPUTES

In NSW in July 2001 there were 16,500 working days lost due to industrial disputes, a decrease of 64.0% on the working days lost in June 2001. Nationally, there were 46,800 working days lost due to industrial disputes in July 2001.

PRODUCTION

Coal production for July 2001 was 10,236,000 tonnes, a decrease of 12.1% from the previous month. Nationally, there were 27,482,000 tonnes of coal produced.

BUILDING APPROVALS

The seasonally adjusted number of dwelling units approved for NSW in August 2001 was 3,833 dwelling units. This was an increase of 51.6% from August 2000. Nationally, there were 15,711 dwelling units approved, an increase of 63.6% from August 2000.

RETAIL

In seasonally adjusted terms, total retail sales for NSW in August 2001 were \$4,725.5m. Nationally, total retail sales were \$13,672.5m.

NEW MOTOR VEHICLE REGISTRATIONS

In September 2001, there were 21,526 new motor vehicle registrations for NSW (seasonally adjusted), a decrease of 2.9% on August 2001 and a decrease of 4.9% from September 2000. Nationally, there were 65,139 new motor vehicle registrations.

CPI

The Consumer Price Index (CPI) for the September quarter 2001 for Sydney was 135.4, an increase of 0.3% on the June quarter 2001 and an increase of 2.9% on the September quarter 2000.

FINANCE

The seasonally adjusted value of housing finance commitments for owner occupation in NSW in August 2001 was \$3,365m, an increase of 44.0% on August 2000. Nationally, there was \$7,874m in housing finance commitments for owner occupation.

IMPORTS AND EXPORTS

In August 2001 the value of imports into NSW was \$4,637m, an increase of 6.6% on July 2001 but a decrease of 6.3% on August 2000. The value of exports from NSW was \$1,849m, a decrease of 6.6% from July 2001. Nationally, there was \$10,537m in imports and \$9,927m in exports.

MAIN FEATURES

BUILDING APPROVALS

In seasonally adjusted terms, the number of dwelling units approved in NSW for August 2001 was 3,833 (including 2,317 new houses). This represented an increase of 15.6% on the previous month. Compared with August 2000, the number of new dwellings approved increased by 51.6%. Nationally, the figure was 15,711 (including 10,806 new houses) for August 2001, an increase of 17.0% on the previous month and 63.6% higher than the figure for August 2000.

The seasonally adjusted value of new residential building for NSW in August 2001 was \$587.9m, an increase of 5.7% on July 2001 and 53.3% on August 2000. The national figure was \$2,323.4m, an increase of 24.7% on the previous month and 86.4% higher than the figure for August 2000.

In original terms, the value of total building in NSW was \$1,097.1m, a fall of 7.6% from July 2001 but a rise of 42.4% compared with August 2000. The national figure of \$3,809.4m was up 15.9% on July 2001 and up 48.7% on August 2000.

IMPORTS AND EXPORTS

In August 2001, the customs value of imports into NSW was \$4,637m and the value of exports (FOB) from NSW was \$1,849m. Imports into NSW increased by 6.6% from July 2001 and exports decreased by 6.6%. Over the year, imports decreased by 6.3% and exports increased by 1.3%. Nationally, in August 2001, there was \$10,537m in imports (an increase of 9.2% over the year) and \$9,927m in exports (an increase of 10.8% over the year).

Commodities exported from NSW in August 2001 included Meat and meat preparations (\$129m), Cereals and cereal preparations (\$82m), Wool and other animal hair (\$75m), Coal, coke and briquettes (\$361m), Iron and steel (\$12m), Aluminium (\$130m) and Office machines and automatic data processing machines (\$31m). From July 2001, there was an increase of 14.3% in exports of Wool and other animal hair, but decreases for Coal, coke and briquettes (down 18.6%) and Cereal and cereal preparations (down 14.5%). Compared with August 2000, there were increases in exports of Meat and meat preparations (up 30.6%) and Coal, coke and briquettes (up 19.9%) and decreases for Iron and steel (down 82.4%) and Cereals and cereal preparations (down 42.4%).

Nationally, compared with August 2000, there were increases in exports for Coal, coke and briquettes (up 35.6%), Wool and other animal hair (up 31.1%) and Meat and meat preparations (up 29.1%) and a decrease in exports of Iron and steel (down 36.6%).

LIST OF TABLES AND GRAPHS

page

POPULATION	1	Estimated resident population, NSW	6
LABOUR	2	Labour data, latest time period, NSW and Australia	7
	3	Labour data, time series, NSW	7
	4	Labour force status of the civilian population, NSW	8
	5	Graph: Unemployment rates, NSW and Australia	9
PRODUCTION	6	Coal and electricity production, latest time period, NSW and Australia	10
	7	Coal and electricity production, time series, NSW	10
BUILDING	8	Building approvals, latest time period, NSW and Australia	11
	9	Building approvals, time series, NSW	11
RETAIL TRADE	10	Turnover of retail establishments, latest time period, NSW and Australia	12
	11	Turnover of retail establishments, seasonally adjusted, time series, NSW	12
NEW MOTOR VEHICLE REGISTRATIONS	12	New motor vehicle registrations, latest time period, NSW and Australia	13
	13	New motor vehicle registrations, seasonally adjusted, time series, NSW	13
TOURISM	14	Accommodation establishments, latest time period, NSW and Australia	14
	15	Accommodation establishments, time series, Sydney and NSW	14
	16	Graph: Hotels, motels etc., monthly room occupancy rates, Sydney Tourism Region and NSW	14
CONSUMER AND PRODUCER PRICE INDEXES	17	Consumer and producer price indexes, latest time period, NSW and Australia	15
	18	Consumer and producer price indexes, time series, NSW	15
	19	Graph: Consumer Price Index, Sydney and average of eight capital cities	15
FINANCE	20	Finance commitments, latest time period, NSW and Australia	16
	21	Finance commitments, time series, NSW	16
STATE GOVERNMENT FINANCE	22	Government finance, general government sector, monthly operating statement, NSW	17
INVESTMENT	23	Actual private new fixed capital expenditure, latest time period, NSW and Australia	18
	24	Actual private new fixed capital expenditure, time series, NSW	18
	25	Graph: Actual private new fixed capital expenditure by type of asset, trend estimate, NSW	18
INTERNATIONAL TRADE	26	Imports and exports, latest time period, NSW and Australia	19
	27	Imports and exports, time series, NSW	19

1 ESTIMATED RESIDENT POPULATION—NSW

	<i>Estimated resident population at end of period</i>			<i>Increase during period</i>			<i>Mean estimated resident population for year ended</i>	
	<i>Males</i>	<i>Females</i>	<i>Persons</i>	<i>Natural increase(a)</i>	<i>Net estimated migration(b)</i>	<i>Total increase</i>	<i>30 June</i>	<i>31 December</i>
	'000	'000	'000	'000	'000	'000	'000	'000
1998	3 164.5	3 204.0	6 368.5	39.9	28.1	68.1	r 6 303.5	r 6 335.7
1999	3 197.4	3 234.1	6 431.6	40.3	22.7	63.0	r 6 367.3	r 6 397.9
2000	3 234.9	3 266.7	6 501.7	42.0	28.1	70.1	r 6 430.5	r 6 464.7
1999								
June qtr	3 179.2	3 217.5	6 396.7	10.1	5.1	15.2
September qtr	3 188.3	3 225.5	6 413.8	9.4	7.7	17.1
December qtr	3 197.4	3 234.1	6 431.6	10.1	7.7	17.8
2000								
March qtr	3 205.9	3 241.3	6 447.1	11.1	4.5	15.6
June qtr	3 214.2	3 248.3	6 462.5	10.1	5.2	15.4
September qtr	3 225.0	3 257.5	6 482.5	9.2	10.8	20.0
December qtr	3 234.9	3 266.7	6 501.7	11.6	7.6	19.2
2001								
March qtr	3 242.8	3 273.8	6 516.6	9.3	5.6	14.9

(a) Excess of live births over deaths.

(b) Special arrangements were put in place to estimate net overseas migration data for September and December Quarters 2000 and thereby enable production of State and Territory population estimates. These estimates were based on a sample of passenger cards completed by persons arriving in or departing from Australia in the period August through to December 2000 together with other information available to the Department of Immigration and Multicultural Affairs (DIMA). Further information is available in Demography Working paper 2001/1 — Estimating July to December 2000 Net Overseas Migration, available on the ABS website.

Source: Australian Demographic Statistics (Cat. no. 3101.0).

2 LABOUR—NSW AND AUSTRALIA

	Unit	Latest period	Latest figure	New South Wales		Australia		
				Change from prior period	Change from same period prior year	Latest figure	Change from prior period	Change from same period prior year
				%	%	no.	%	%
Employed persons (seasonally adjusted)	'000	September 2001	3 054.6	-1.3	-0.2	9 164.6	-0.5	0.3
Unemployed persons (seasonally adjusted)	'000	September 2001	202.4	3.3	19.3	657.5	-1.7	12.9
Labour force (seasonally adjusted)	'000	September 2001	3 257.0	-1.0	0.8	9 822.2	-0.6	1.1
Participation rate (seasonally adjusted)	%	September 2001	62.5	-1.1	—	63.5	-0.8	-0.3
Unemployment rate (seasonally adjusted)	%	September 2001	6.2	3.3	17.0	6.7	-1.5	11.7
Industrial disputes — working days lost	'000	July 2001	16.5	-64.0	120.0	46.8	-30.2	112.7
Job vacancies	'000	August 2001	27.7	-2.5	-36.9	92.7	11.2	-21.6
Average weekly employee earnings — full-time adult ordinary time earnings (seasonally adjusted)	\$	May 2001	873.9	3.9	5.9	826.3	2.2	5.3

Source: Average Weekly Earnings, States and Australia (Cat. no. 6302.0); Industrial Disputes, Australia (Cat. no. 6321.0); Job Vacancies, Australia (Cat. no. 6354.0); Labour Force, Australia, Preliminary (Cat. no. 6202.0).

3 LABOUR—NSW

	Seasonally adjusted(a)						
	Employed persons	Unemployed persons	Labour force	Participation rate	Unemployment rate	Industrial disputes (working days lost)	Job vacancies
	'000	'000	'000	%	%	'000	'000
2000							
July	3 059.8	167.1	3 226.9	62.6	5.2	7.5	..
August	3 082.1	168.4	3 250.5	63.0	5.2	8.8	43.9
September	3 060.6	169.6	3 230.2	62.5	5.3	8.3	..
October	3 046.2	168.8	3 215.0	62.2	5.3	5.3	..
November	3 028.3	176.5	3 204.8	62.0	5.5	9.2	40.4
December	3 033.4	184.2	3 217.6	62.2	5.7	4.4	..
2001							
January	3 035.3	179.5	3 214.8	62.1	5.6	5.8	..
February	3 032.1	190.8	3 222.9	62.2	5.9	8.6	32.0
March	3 035.7	174.9	3 210.6	61.9	5.4	8.2	..
April	3 070.1	187.3	3 257.4	62.8	5.7	17.7	..
May	3 064.7	189.4	3 254.1	62.6	5.8	14.8	28.4
June	3 060.4	200.6	3 261.0	62.7	6.2	r 45.9	..
July	3 059.1	191.9	3 251.0	62.5	5.9	16.5	..
August	3 095.2	195.9	3 291.1	63.2	6.0	n.y.a.	27.7
September	3 054.6	202.4	3 257.0	62.5	6.2	n.y.a.	..

(a) Seasonally adjusted estimates have been revised from February 1978 to reflect the annual reanalysis of seasonal factors which occurs in February each year. For further information please see the feature article in the February 2001 edition of Labour Force, Australia (Cat. no. 6203.0).

Source: Industrial Disputes, Australia (Cat. no. 6321.0); Job Vacancies, Australia (Cat. no. 6354.0); Labour Force, Australia, Preliminary (Cat. no. 6202.0).

4 LABOUR FORCE STATUS, NSW—ORIGINAL

	<i>Employed</i>		<i>Unemployed</i>		<i>Labour force</i>	<i>Not in labour force</i>	<i>Civilian population aged 15 years and over</i>	<i>Unemployment rate(a)</i>	<i>Participation rate(b)</i>
	<i>Full-time workers</i>	<i>Total</i>	<i>Looking for full-time work</i>	<i>Total</i>					
	'000	'000	'000	'000	'000	'000	'000	%	%
MALES									
September									
1997	1 435.4	1 617.1	122.3	141.1	1 758.3	672.0	2 430.3	8.0	72.3
1998	1 467.3	1 651.4	115.3	131.0	1 782.4	682.8	2 465.2	7.4	72.3
1999	1 504.0	1 699.6	95.8	120.8	1 820.5	682.0	2 502.4	6.6	72.7
2000									
July	1 529.6	1 736.5	78.9	94.2	1 830.7	706.9	2 537.6	5.1	72.1
August	1 492.9	1 704.6	86.1	97.5	1 802.2	738.4	2 540.5	5.4	70.9
September	1 519.5	1 742.4	85.2	101.2	1 843.6	699.9	2 543.5	5.5	72.5
October	1 507.8	1 724.6	82.9	95.9	1 820.5	725.0	2 545.5	5.3	71.5
November	1 489.4	1 701.9	87.6	102.4	1 804.3	743.2	2 547.4	5.7	70.8
December	1 513.6	1 729.5	93.4	110.4	1 839.9	709.5	2 549.4	6.0	72.2
2001									
January	1 475.8	1 685.8	104.5	120.3	1 806.1	745.2	2 551.3	6.7	70.8
February	1 479.1	1 684.9	103.8	124.4	1 809.2	743.9	2 553.2	6.9	70.9
March	1 484.0	1 700.1	90.8	108.5	1 808.5	746.5	2 555.1	6.0	70.8
April	1 480.8	1 714.1	89.1	105.1	1 819.1	738.5	2 557.6	5.8	71.1
May	1 478.0	1 713.1	89.0	107.8	1 820.9	739.3	2 560.1	5.9	71.1
June	1 479.3	1 713.0	91.6	110.0	1 823.1	739.6	2 562.7	6.0	71.1
July	1 484.9	1 732.4	87.4	103.8	1 836.2	729.4	2 565.6	5.7	71.6
August	1 466.3	1 710.7	88.8	103.0	1 813.7	754.7	2 568.4	5.7	70.6
September	1 502.9	1 737.0	98.5	117.6	1 854.6	716.8	2 571.3	6.3	72.1
FEMALES									
September									
1997	724.6	1 234.5	62.4	89.1	1 323.5	1 198.1	2 521.6	6.7	52.5
1998	757.2	1 280.4	61.0	92.3	1 372.7	1 181.0	2 553.7	6.7	53.8
1999	750.9	1 291.4	60.0	91.2	1 382.6	1 205.3	2 587.9	6.6	53.4
2000									
July	812.3	1 346.6	36.0	57.8	1 404.4	1 212.2	2 616.7	4.1	53.7
August	787.5	1 334.4	39.7	67.3	1 401.7	1 217.6	2 619.3	4.8	53.5
September	805.6	1 359.4	42.6	70.6	1 429.9	1 192.1	2 622.0	4.9	54.5
October	785.4	1 336.8	39.4	63.4	1 400.2	1 223.3	2 623.5	4.5	53.4
November	787.6	1 320.8	43.0	67.2	1 388.0	1 236.9	2 624.9	4.8	52.9
December	799.2	1 345.9	53.4	74.3	1 420.2	1 206.2	2 626.4	5.2	54.1
2001									
January	787.5	1 305.9	46.2	69.2	1 375.1	1 252.6	2 627.7	5.0	52.3
February	790.6	1 321.2	59.6	91.0	1 412.1	1 216.9	2 629.0	6.4	53.7
March	800.3	1 331.2	45.7	81.0	1 412.2	1 218.1	2 630.3	5.7	53.7
April	785.7	1 357.1	48.2	81.4	1 438.5	1 193.7	2 632.3	5.7	54.7
May	781.5	1 344.7	50.2	79.1	1 423.8	1 210.4	2 634.2	5.6	54.1
June	792.0	1 353.6	50.3	78.7	1 432.4	1 203.8	2 636.2	5.5	54.3
July	790.7	1 350.9	47.3	70.6	1 421.6	1 217.2	2 638.7	5.0	53.9
August	766.4	1 340.3	59.5	88.3	1 428.6	1 212.7	2 641.3	6.2	54.1
September	790.9	1 359.4	61.3	87.4	1 446.8	1 197.0	2 643.8	6.0	54.7

For footnotes see end of table.

continued...

4 LABOUR FORCE STATUS, NSW—ORIGINAL—continued

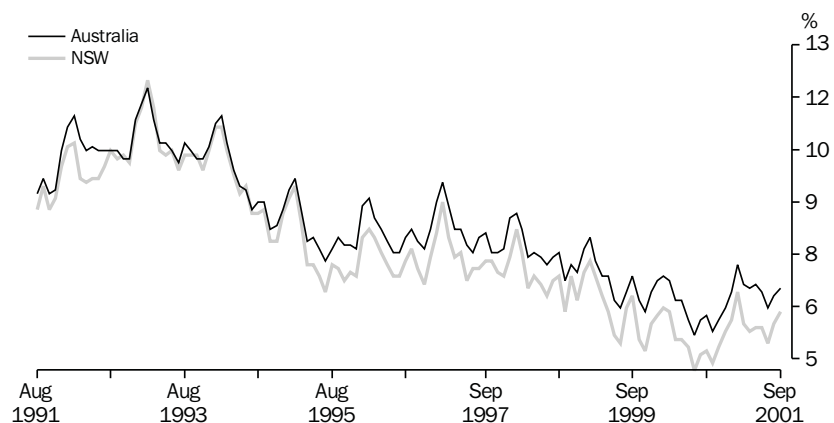
	Employed		Unemployed		Labour force	Not in labour force	Civilian population aged 15 years and over	Unemployment rate(a)	Participation rate(b)
	Full-time workers	Total	Looking for full-time work	Total					
	'000	'000	'000	'000	'000	'000	'000	%	%
PERSONS									
September									
1997	2 160.0	2 851.6	184.7	230.2	3 081.8	1 870.1	4 951.9	7.5	62.2
1998	2 224.5	2 931.8	176.3	223.3	3 155.1	1 863.7	5 018.9	7.1	62.9
1999	2 254.9	2 991.0	155.8	212.0	3 203.0	1 887.3	5 090.3	6.6	62.9
2000									
July	2 341.9	3 083.1	114.9	152.0	3 235.1	1 919.1	5 154.3	4.7	62.8
August	2 280.4	3 039.0	125.8	164.9	3 203.9	1 956.0	5 159.9	5.1	62.1
September	2 325.2	3 101.7	127.8	171.8	3 273.5	1 892.0	5 165.5	5.2	63.4
October	2 293.3	3 061.4	122.3	159.3	3 220.7	1 948.3	5 169.0	4.9	62.3
November	2 277.0	3 022.7	130.5	169.6	3 192.3	1 980.1	5 172.4	5.3	61.7
December	2 312.8	3 075.4	146.8	184.7	3 260.1	1 915.7	5 175.8	5.7	63.0
2001									
January	2 263.4	2 991.7	150.8	189.4	3 181.2	1 997.8	5 179.0	6.0	61.4
February	2 269.7	3 006.0	163.4	215.3	3 221.4	1 960.8	5 182.2	6.7	62.2
March	2 284.3	3 031.3	136.5	189.5	3 220.8	1 964.6	5 185.4	5.9	62.1
April	2 266.5	3 071.2	137.2	186.5	3 257.7	1 932.2	5 189.9	5.7	62.8
May	2 259.4	3 057.7	139.2	186.9	3 244.7	1 949.7	5 194.4	5.8	62.5
June	2 271.3	3 066.7	142.0	188.8	3 255.4	1 943.4	5 198.9	5.8	62.6
July	2 275.6	3 083.3	134.7	174.4	3 257.7	1 946.6	5 204.3	5.4	62.6
August	2 232.6	3 051.0	148.3	191.3	3 242.3	1 967.4	5 209.7	5.9	62.2
September	2 293.7	3 096.4	159.8	205.0	3 301.4	1 913.8	5 215.1	6.2	63.3

(a) The number of unemployed in each group expressed as a percentage of the labour force in the same group.

(b) The labour force in each group expressed as a percentage of the civilian population aged 15 years and over in the same group.

Source: Labour Force, Australia, Preliminary (Cat. no. 6202.0).

5 UNEMPLOYMENT RATE—ORIGINAL



Source: Labour Force, Australia, Preliminary (Cat. no. 6202.0)

6 COAL AND ELECTRICITY PRODUCTION, NSW AND AUSTRALIA—ORIGINAL

	Unit	Latest period	Latest figure	New South Wales		Australia		
				Change from prior period	Change from same period prior year	Latest figure	Change from prior period	Change from same period prior year
				%	%		%	%
Raw coal won								
Underground	'000 tonnes	July 2001	4 663	-1.8	13.7	8 585	1.6	12.6
Open cut	'000 tonnes	July 2001	5 573	-19.1	-14.5	18 897	-4.8	5.7
Total	'000 tonnes	July 2001	10 236	-12.1	-3.6	27 482	-2.9	7.8
Electricity	mill. kWh	June qtr 2001	16 642	—	-4.0	46 317	-1.2	-2.2

Source: Joint Coal Board for NSW and Australia from ABS unpublished statistics, *Manufacturing Production, Australia* (Cat. no. 8301.0).

7 COAL AND ELECTRICITY PRODUCTION, NSW—ORIGINAL

	Raw coal won			Electricity mill. kWh
	Underground	Open cut	Total	
	'000 tonnes	'000 tonnes	'000 tonnes	
1998–1999	51 318	80 063	131 382	63 743
1999–2000	52 763	80 133	132 896	65 934
2000–2000	53 414	86 012	139 427	69 324
1999				
December	5 018	6 967	11 985	..
2000				
May	5 601	8 591	14 192	17 334
June	3 847	6 410	10 257	..
July	4 102	6 515	10 617	..
August	5 613	8 269	13 883	19 289
September	3 836	7 198	11 034	..
October	4 552	6 976	11 528	..
November	5 708	8 014	13 722	16 749
December	3 166	6 253	9 419	..
2001				
January r	3 336	6 395	9 732	..
February r	4 261	5 999	10 260	16 644
March r	5 491	7 763	13 254	..
April r	3 440	6 045	9 485	..
May r	5 463	8 742	14 205	16 642
June r	4 749	6 890	11 639	..
July	4 663	5 573	10 236	..

Source: Joint Coal Board, *Manufacturing Production, Australia* (Cat. no. 8301.0).

8 BUILDING APPROVALS—NSW AND AUSTRALIA

	Unit	Latest period	Latest figure	New South Wales		Australia		
				Change from prior period	Change from same period prior year	Change from prior period	Change from same period prior year	
				%	%	%	%	%
Number of dwelling units(a) (seasonally adjusted(b))								
New houses	no.	August 2001	2 317	9.1	49.2	10 806	5.6	70.4
Total	no.	August 2001	3 833	15.6	51.6	15 711	17.0	63.6
Value of new residential building (seasonally adjusted)	\$m	August 2001	587.9	5.7	53.3	2 323.4	24.7	86.4
Value of alterations and additions to residential building(c) (seasonally adjusted)	\$m	August 2001	110.9	6.1	32.5	338.4	13.5	28.7
Value of non-residential building(d) (original)	\$m	August 2001	347.0	-27.7	23.8	1 031.4	-8.8	3.2
Value of all building (original)	\$m	August 2001	1 097.1	-7.6	42.4	3 809.4	15.9	48.7

(a) Includes dwelling units approved as part of the construction of non-residential building and alterations and additions to existing buildings (including conversions to dwelling units).

(b) Seasonally adjusted and trend estimates to November 2000 have been revised. See *Building Approvals, Australia* (Cat. no. 8731.0).

(c) Valued at \$10,000 or more. Includes conversions of existing buildings into residential buildings.

(d) Valued at \$50,000 or more.

Source: *Building Approvals, Australia* (Cat. no. 8731.0).

9 BUILDING APPROVALS—NSW

	Number of dwelling units(a), seasonally adjusted				Value of building approvals(b)			
	New houses		Total		Seasonally adjusted		Original	
	Private sector	Total	Private sector	Total	New residential building	Alterations and additions to residential building(c)	Non-residential building(d)	All building
	no.	no.	no.	no.	\$m	\$m	\$m	\$m
1998–1999	4 558.3	12 032.3
1999–2000	4 511.3	12 684.7
2000–2001 r	3 637.8	9 614.2
2000								
June	1 891	1 899	3 202	3 326	452.6	87.0	350.5	865.3
July r	1 364	1 372	1 905	1 993	285.4	75.2	287.2	668.8
August	1 543	1 553	2 459	2 529	383.4	83.7	280.4	770.5
September	1 492	1 500	2 805	2 892	409.2	r 84.7	r 309.9	r 766.1
October	1 753	1 762	3 563	3 606	473.6	120.4	381.2	942.6
November	1 530	1 540	2 913	2 994	409.2	87.1	270.1	858.3
December	1 466	1 477	2 819	2 918	384.4	140.2	208.9	693.6
2001								
January	1 548	1 556	2 864	2 910	414.0	84.7	553.1	1 008.5
February	1 573	1 579	2 448	2 614	348.0	86.6	391.3	812.9
March	1 455	1 466	2 636	2 714	376.7	93.2	210.3	660.9
April	1 542	1 549	2 604	2 721	383.9	89.0	r 217.1	669.0
May	1 741	1 752	3 104	3 212	461.5	98.3	270.6	912.8
June	2 075	2 079	r 3 269	r 3 289	534.9	106.3	257.7	850.2
July r	2 118	2 123	3 288	3 315	556.2	104.5	480.2	1 186.8
August	2 300	2 317	3 726	3 833	587.9	110.9	347.0	1 097.1

(a) Includes dwelling units approved as part of the construction of non-residential building and alterations and additions to existing buildings (including conversions to dwelling units).

(b) From July 2000, value data for both residential and non-residential building approvals will be on a GST inclusive basis.

(c) Valued at \$10,000 or more. Includes conversions of existing buildings into residential buildings.

(d) Valued at \$50,000 or more.

Source: *Building Approvals, Australia* (Cat. no. 8731.0).

10 TURNOVER OF RETAIL ESTABLISHMENTS(a), NSW AND AUSTRALIA(b)—SEASONALLY ADJUSTED

		New South Wales			Australia		
	Latest period	Latest figure \$m	Change from prior period %	Change from same period prior year %	Latest figure \$m	Change from prior period %	Change from same period prior year %
Food retailing	August 2001	1 759.9	0.7	7.7	5 430.2	0.6	7.8
Department stores	August 2001	381.1	-3.2	-4.4	1 100.8	-3.0	-2.9
Clothing and soft good retailing	August 2001	305.1	-3.4	1.2	863.3	0.1	7.5
Household good retailing	August 2001	490.3	0.3	3.4	1 623.3	-0.1	8.9
Recreational good retailing	August 2001	214.0	0.5	0.7	631.6	1.4	5.1
Other retailing	August 2001	507.9	2.1	19.6	1 536.4	0.5	16.4
Hospitality and services	August 2001	1 067.3	3.6	8.0	2 486.9	0.8	10.3
Total value of retail sales	August 2001	4 725.5	0.8	6.6	13 672.5	0.2	8.2

(a) The figures shown are derived from a monthly survey of retail establishments. Excludes motor vehicle, boat and caravan dealers, service stations, smash repairers, tyre and battery retailers, bread and milk vendors, footwear repairers and electrical appliance repairers n.e.c. Retail establishments which do not have employees are excluded from the survey. Turnover includes retail sales, wholesale sales, takings from repairs, meals and hiring of goods; and commissions from agency activity (e.g. commissions received from collecting dry cleaning, selling lottery tickets etc.).

(b) Data from July 2000 reference month onwards are recorded inclusive of GST.

Source: Retail Trade, Australia (Cat. no. 8501.0).

11 TURNOVER OF RETAIL ESTABLISHMENTS(a), NSW(b)—SEASONALLY ADJUSTED(c)

	Food retailing \$m	Department stores \$m	Clothing and soft good retailing \$m	Household good retailing \$m	Recreational good retailing \$m	Other retailing \$m	Hospitality and services \$m	Total \$m
2000								
June r	1 579.1	463.7	372.9	575.2	201.9	476.4	900.0	4 569.3
July r	1 607.2	298.5	279.6	427.8	218.9	397.9	920.9	4 150.7
August r	1 634.1	398.7	301.4	474.3	212.5	424.7	988.6	4 434.3
September r	1 650.2	393.8	365.5	467.3	206.0	462.5	1 060.5	4 605.7
October r	1 629.9	385.4	307.7	471.4	214.9	454.3	983.0	4 446.6
November r	1 608.5	375.1	304.4	483.2	212.6	439.2	953.0	4 376.1
December r	1 644.4	393.1	312.0	487.2	208.6	450.3	937.5	4 433.2
2001								
January r	1 666.2	388.2	304.7	493.9	227.2	455.1	984.0	4 519.4
February r	1 678.9	391.1	298.4	480.4	240.7	472.2	995.3	4 556.9
March r	1 686.9	388.0	321.8	489.0	234.1	470.4	1 005.2	4 595.4
April r	1 719.5	387.2	332.5	483.3	217.6	482.5	985.8	4 608.3
May r	1 707.6	389.0	331.7	479.4	208.5	488.8	997.8	4 602.8
June r	1 725.9	385.5	325.9	510.2	213.3	492.0	990.0	4 642.7
July r	1 747.6	393.5	316.0	488.8	212.9	497.5	1 030.7	4 687.0
August	1 759.9	381.1	305.1	490.3	214.0	507.9	1 067.3	4 725.5

(a) The figures shown are derived from a monthly survey of retail establishments. Excludes motor vehicle, boat and caravan dealers, service stations, smash repairers, tyre and battery retailers, bread and milk vendors, footwear repairers and electrical appliance repairers n.e.c. Retail establishments which do not have employees are excluded from the survey. Turnover includes retail sales, wholesale sales, takings from repairs, meals and hiring of goods; and commissions from agency activity (e.g. commissions received from collecting dry cleaning, selling lottery tickets etc.).

(b) Data from July 2000 reference month onwards are recorded inclusive of GST.

(c) Data for previous months have been revised due to concurrent seasonal adjustment methodology. See Explanatory Notes in Retail Trade, Australia (Cat. no. 8501.0).

Source: Retail Trade, Australia (Cat. no. 8501.0).

12 NEW MOTOR VEHICLE REGISTRATIONS(a), NSW AND AUSTRALIA—SEASONALLY ADJUSTED(b)

		New South Wales			Australia		
		Latest figure no.	Change from prior period	Change from same period prior year	Latest figure no.	Change from prior period	Change from same period prior year
			%	%		%	%
Passenger vehicles	September 2001	17 918	−3.5	−6.9	54 061	−0.2	−6.9
Other vehicles (excluding motor cycles)	September 2001	3 608	−0.1	6.5	11 078	0.1	8.9
Total registrations (excluding motor cycles)	September 2001	21 526	−2.9	−4.9	65 139	−0.2	−4.6

(a) Includes vehicles (other than those of the defence forces) owned by Government departments and authorities. Excludes mobile plant and equipment, tractors, trailers and non-motorised caravans.

(b) The changes to the seasonally adjusted series result from the annual re-estimation of seasonal factors.

Source: New Motor Vehicle Registrations, Australia, Preliminary (Cat. no. 9301.0).

13 NEW MOTOR VEHICLE REGISTRATIONS(a), NSW—SEASONALLY ADJUSTED(b)

	Passenger vehicles no.	Other vehicles (excluding motor cycles) no.	Total (excluding motor cycles) no.
2000			
July	23 670	3 066	26 736
August	23 809	3 616	27 425
September	19 247	3 387	22 634
October	18 823	3 328	22 151
November	19 611	3 063	22 673
December	21 804	3 430	25 234
2001			
January	18 585	3 529	22 114
February	17 706	3 290	20 996
March	18 293	3 108	21 401
April	18 160	3 086	21 246
May	17 989	2 949	20 938
June	16 425	3 024	19 449
July	17 890	3 436	21 326
August r	18 559	3 612	22 171
September	17 918	3 608	21 526

(a) Includes vehicles (other than those of the defence forces) owned by Government departments and authorities. Excludes mobile plant and equipment, tractors, trailers and non-motorised caravans.

(b) The changes to the seasonally adjusted series result from the annual re-estimation of seasonal factors.

Source: New Motor Vehicle Registrations, Australia, Preliminary (Cat. no. 9301.0).

14 ACCOMMODATION ESTABLISHMENTS(a) NSW AND AUSTRALIA—ORIGINAL

			New South Wales			Australia		
			Latest figure	Change from prior period	Change from same period prior year	Latest figure	Change from prior period	Change from same period prior year
	Unit	Latest period		%	%		%	%
Room nights	'000	June qtr 2001	3 223.7	-5.8	-3.0	9 872.9	-3.1	-1.3
Room occupancy rate	%	June qtr 2001	54.1	-6.6	-6.9	55.2	-4.3	-3.3
Takings(b)	\$'000	June qtr 2001	388 268	-12.1	3.8	1 111 337	-8.8	6.9

(a) Licensed hotels with facilities, motels and guest houses and serviced apartments with 15 or more rooms or units.

(b) Includes GST.

Source: Tourist Accommodation, Australia (Cat. no. 8635.0).

15 ACCOMMODATION ESTABLISHMENTS(a) SYDNEY AND NSW—ORIGINAL

	Sydney Tourism Region(b)			New South Wales		
	Room nights	Room occupancy rate	Takings(c)	Room nights	Room occupancy rate	Takings
	'000	%	\$'000	'000	%	\$'000
2000						
March qtr	1 980.0	71.7	279 374	3 388.1	60.3	397 869
June qtr	1 902.6	67.1	258 225	3 323.9	58.1	374 005
September qtr	2 093.6	69.6	412 378	3 543.3	59.7	566 316
December qtr	2 096.0	68.8	334 433	3 498.0	58.7	470 017
2001						
March qtr	2 037.9	67.1	304 602	3 421.1	57.9	441 871
June qtr	1 866.5	61.0	267 939	3 223.7	54.1	388 268

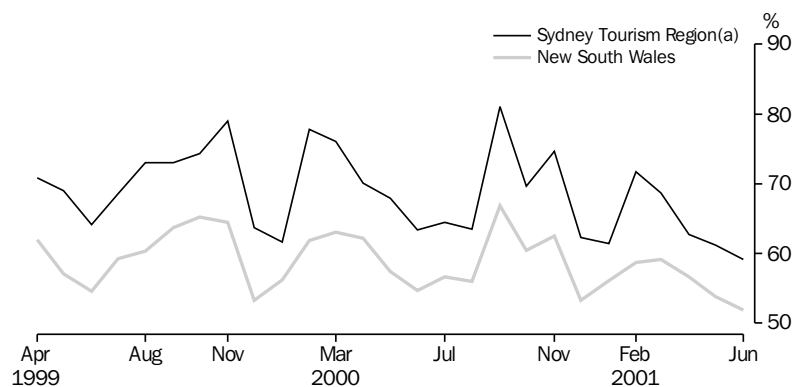
(a) Licensed hotels with facilities, motels and guest houses and serviced apartments with 15 or more rooms or units.

(b) Excludes Gosford, Wyong and Blue Mountains Statistical Local Areas.

(c) Takings after 1 July 2000 are on a GST inclusive basis.

Source: Tourist Accommodation, Small Area Data, New South Wales (Cat. no. 8635.1.40.001).

16 ACCOMMODATION ESTABLISHMENTS, MONTHLY ROOM OCCUPANCY RATE—ORIGINAL



(a) Excludes Gosford, Wyong and Blue Mountains Statistical Local Areas.

Source: Tourist Accommodation, Small Area Data, NSW (Prod. no. 8635.1.40.001).

17 CONSUMER AND PRODUCER PRICE INDEXES—NSW AND AUSTRALIA

			New South Wales(a)			Australia(b)		
	Unit	Latest period	Latest figure	Change from prior period %	Change from same period prior year %	Latest figure	Change from prior period %	Change from same period prior year %
Consumer Price Index (all groups)	1989–90=100.0	September qtr 2001	135.4	0.3	2.9	134.2	0.3	2.5
Price index of materials used in house building (all groups)	1989–90=100.0	September qtr 2001	130.5	0.2	0.4	124.7	0.2	0.2
Price index of materials used in building other than house building (all groups)	1989–90=100.0	September qtr 2001	117.1	0.3	1.5	117.5	0.3	1.7

(a) Refers to State capital city — Sydney.

(b) For the Consumer Price Index this is the weighted average of eight capital cities and for the other two indexes, the weighted average of the six State capital cities.

Source: Consumer Price Index, Australia (Cat. no. 6401.0); Producer Price Indexes, Australia (Cat. no. 6427.0).

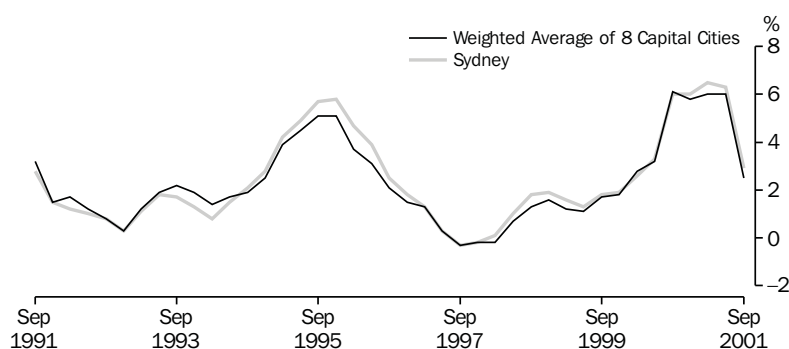
18 CONSUMER AND PRODUCER PRICE INDEXES—NSW(a)

	Consumer Price Index, all groups	Price Index of materials used in house building, all groups	Price Index of materials used in building other than house building, all groups
	1989–90 = 100.0	1989–90 = 100.0	1989–90 = 100.0
2000			
June qtr	127.0	131.2	117.3
September qtr	131.6	130.0	115.4
December qtr	132.2	129.8	115.7
2001			
March qtr	134.0	129.8	116.4
June qtr	135.0	130.2	116.7
September qtr	135.4	130.5	117.1

(a) Refers to State capital city — Sydney.

Source: Consumer Price Index, Australia (Cat. no. 6401.0); Producer Price Indexes, Australia (Cat. no. 6427.0).

19 CONSUMER PRICE INDEX, ANNUAL RATE OF CHANGE



Source: Consumer Price Index (Cat. no. 6401.0).

20 SECURED HOUSING FINANCE COMMITMENTS TO INDIVIDUALS FOR OWNER OCCUPATION—NSW AND AUSTRALIA

		New South Wales			Australia		
		Latest figure \$m	Change from prior period %	Change from same period prior year %	Latest figure \$m	Change from prior period %	Change from same period prior year %
Lending commitments for the construction or purchase of dwellings —							
Construction of dwellings	August 2001	269	2.7	62.0	1 047	2.9	73.3
Purchase of newly erected dwellings	August 2001	161	10.3	83.0	341	1.8	57.9
Purchase of established dwellings(a)	August 2001	2 421	3.1	41.6	5 413	3.8	32.8
Refinancing of existing dwellings	August 2001	693	0.1	44.4	1 580	2.8	38.8
Lending commitments for alterations and additions	August 2001	135	3.8	48.4	325	-1.5	33.7
Total lending commitments to individuals for housing(b)	August 2001	3 544	2.8	45.0	8 381	3.4	38.9
Total lending commitments to individuals for housing (seasonally adjusted)(b)	August 2001	3 365	-1.2	44.0	7 874	-3.3	38.6

(a) Excludes refinancing.

(b) Excludes alterations and additions.

Source: Housing Finance for Owner Occupation, Australia (Cat. no. 5609.0).

21 SECURED HOUSING FINANCE COMMITMENTS TO INDIVIDUALS FOR OWNER OCCUPATION—NSW

	Lending commitments for the construction or purchase of dwellings					Total lending commitments to individuals for housing(b)	
	Construction of dwellings	Purchase of newly erected dwellings	Purchase of established dwellings(a)	Refinancing of existing dwellings	Lending commitments for alterations and additions	Original	Seasonally adjusted
	\$m	\$m	\$m	\$m	\$m	\$m	\$m
1998–1999	2 990	1 147	16 761	4 026	1 126	24 925	..
1999–2000	3 268	1 129	21 636	4 993	1 271	31 026	..
2000–2001	2 074	1 171	21 259	6 464	1 155	30 969	..
2000							
June	197	86	1 629	474	105	2 386	2 232
July	170	71	1 436	451	89	2 129	2 166
August	166	88	1 710	480	91	2 444	2 336
September	152	83	1 467	418	84	2 120	2 165
October	151	65	1 397	492	90	2 105	2 123
November	160	82	1 757	542	85	2 542	2 357
December	143	88	1 688	483	80	2 402	2 690
2001							
January	121	97	1 497	426	79	2 141	2 644
February	151	88	1 630	455	96	2 323	2 464
March	189	120	2 098	622	111	3 029	2 801
April	180	101	1 950	580	103	2 811	2 902
May	246	134	2 405	782	123	3 567	3 147
June	247	153	2 223	733	126	3 357	3 202
July r	262	146	2 348	692	130	3 447	3 406
August	269	161	2 421	693	135	3 544	3 365

(a) Excludes refinancing.

(b) Excludes alterations and additions.

Source: Housing Finance for Owner Occupation, Australia (Cat. no. 5609.0).

22 NSW GOVERNMENT FINANCE, GENERAL GOVERNMENT SECTOR(a)

	Budget 12 months to 30/06/2001	Actual 11 months to 31/05/2001
	\$m	\$m
State revenues		
Taxation	12 412	11 804
Commonwealth grants	12 780	11 777
Capital repatriations	2 400	3 203
Financial distributions	1 210	1 123
Fines, regulatory fees and other	792	838
<i>Total state revenues</i>	<i>29 594</i>	<i>28 745</i>
Operating revenues		
Sale of goods and services	2 171	2 092
Investment income	391	426
Grants and contributions	421	478
Other revenue	298	266
<i>Total operating revenues</i>	<i>3 281</i>	<i>3 262</i>
Expenses		
Employee related — super valuations	—	1 182
Employee related — super other	1 540	1 507
Employee related — other	12 157	11 238
Other operating	6 765	6 344
Maintenance	1 120	992
Depreciation and amortisation	995	1 316
Recurrent grants and subsidies	4 060	4 535
Capital grants and subsidies	1 252	1 002
Finance valuations	278	711
Finance other	1 009	903
<i>Total expenses</i>	<i>29 176</i>	<i>29 730</i>
Gain/(loss) on sale of non-current assets	-14	1
Net cost of services	25 909	26 467
Operating Surplus	3 685	2 278
less valuation gains	-1 888	- 848
less capital acquisitions	-2 540	-1 980
plus depreciation	995	1 316
plus asset sales & other	407	115
Budget Surplus	659	881

(a) The format for reporting NSW Government Finance Statistics has been amended to ensure consistency with the reporting framework used in the 2001–02 Budget Papers. Changes include the end of separate reporting of abnormal items and the consequent need to create a new revenue category (Capital Repatriations) and two new expense categories (Superannuation Valuations and Finance Valuations). Additionally there have been some minor reclassification between expenses and capital expenditure. However, the budgeted Surplus is unchanged from that reported in the 2000–01 Budget Papers.

Source: Financial Statement released by NSW Treasury. Figures may differ from data published in annual ABS publications.

23 ACTUAL PRIVATE NEW FIXED CAPITAL EXPENDITURE, CURRENT PRICES, NSW AND AUSTRALIA—TREND

Type of asset	Latest period	New South Wales			Australia		
		Latest figure	Change from prior period	Change from same period prior year	Latest figure	Change from prior period	Change from same period prior year
		\$m	%	%	\$m	%	%
New buildings and structures	June qtr 2001	705	0.6	-26.3	2 463	5.5	-12.4
Equipment, plant and machinery	June qtr 2001	2 533	-4.8	-14.0	7 313	-1.0	-2.8
Total	June qtr 2001	3 238	-3.7	-17.0	9 776	0.6	-5.4

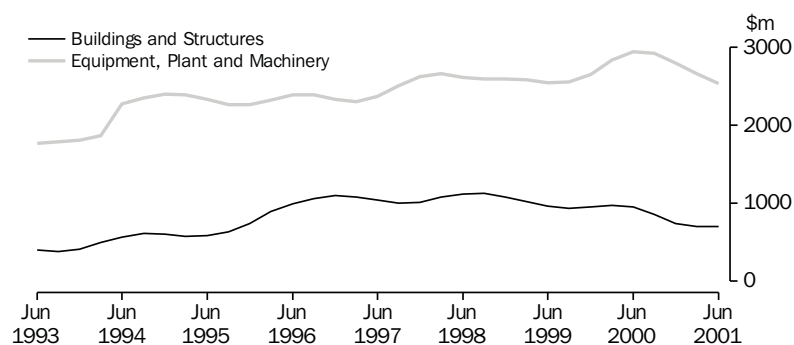
Source: State Estimates of Private New Capital Expenditure (Cat. no. 5646.0).

24 ACTUAL PRIVATE NEW FIXED CAPITAL EXPENDITURE, CURRENT PRICES—NSW, TREND

	Type of asset		Total
	New buildings and structures	Equipment, plant and machinery	
	\$m	\$m	\$m
2000			
March qtr	971	2 839	3 810
June qtr	957	2 946	3 903
September qtr	861	2 927	3 788
December qtr	745	2 800	3 545
2001			
March qtr	701	2 661	3 362
June qtr	705	2 533	3 238

Source: State Estimates of Private New Capital Expenditure (Cat. no. 5646.0).

25 ACTUAL PRIVATE NEW FIXED CAPITAL EXPENDITURE, CURRENT PRICES, NSW—TREND



Source: State Estimates of New Capital Expenditure (Cat. no. 5646.0).

26 INTERNATIONAL TRADE, IMPORTS(a) AND EXPORTS(b)—NSW AND AUSTRALIA(c)

	Latest period	New South Wales			Australia		
		Latest figure	Change from prior period		Latest figure	Change from prior period	
			\$m	%		\$m	%
Overseas imports into NSW	August 2001	4 637	6.6	–6.3	10 537	–1.7	9.2
Total overseas exports(d)	August 2001	1 849	–6.6	1.3	9 927	–1.8	10.8
Export commodities and SITC(e) code							
Meat and meat preparations (01)	August 2001	129	–7.7	30.6	546	–1.2	29.1
Cereals and cereal preparations (04)	August 2001	82	–14.5	–42.4	469	15.4	5.0
Wool and other animal hair (268)	August 2001	75	14.3	12.9	289	9.0	31.1
Coal, coke and briquettes (32)	August 2001	361	–18.6	19.9	1 092	–3.8	35.6
Iron and steel (67)	August 2001	12	–8.6	–82.4	62	13.6	–36.6
Aluminium (684)	August 2001	130	–9.8	–3.2	401	–3.8	–4.8
Office machines and automatic data processing machines (75)	August 2001	31	4.6	17.6	52	7.2	19.9

(a) Figures shown are Customs value.

(b) Restrictions are placed on the release of statistics for certain commodities for reasons of confidentiality. The restrictions do not affect total export and import figures, but they can affect figures at State and commodity levels. More information on the treatment of confidential data in international merchandise trade statistics can be obtained from the Information Paper, *International Merchandise Trade Statistics, Australia: Data Confidentiality* (Cat. no. 5487.0), or the International Trade Confidentiality Manager on 02 6252 5409. Figures shown are Free On Board (FOB) values.

(c) All percentages are calculated using unrounded figures.

(d) Excludes re-exported goods.

(e) Standard International Trade Classification Revision 3.

Source: ABS data available on request, *International Trade database*.

27 INTERNATIONAL TRADE, IMPORTS(a) AND EXPORTS(b)—NSW

	Overseas exports of SITC(c) commodities								
	Overseas imports into NSW	Total overseas exports(d)	Meat and meat preparations (01)	Cereals and cereal preparations (04)	Wool and other animal hair (268)	Coal, coke and briquettes (32)	Iron and steel (67)	Aluminium (684)	Office machines and automatic data processing machines (75)
	\$m	\$m	\$m	\$m	\$m	\$m	\$m	\$m	\$m
1999–2000	47 927	18 966	1 047	1 270	826	3 092	831	1 341	379
2000–2001	r 52 503	r 22 746	1 387	1 517	1 051	r 3 832	247	r 1 638	362
2000									
June	4 866	1 768	93	112	66	268	94	129	29
July	4 493	1 779	101	138	66	318	64	129	31
August	4 947	1 826	99	143	66	301	67	135	27
September	4 472	1 843	89	149	78	292	10	134	30
October	5 071	2 042	120	160	114	337	10	148	37
November	4 936	1 973	118	139	112	283	11	149	26
December	4 243	2 017	105	118	103	309	12	129	36
2001									
January	3 881	1 565	94	87	63	313	9	125	19
February	3 493	1 707	116	116	84	r 264	10	125	27
March	4 321	r 2 053	132	118	123	r 325	12	160	35
April	4 116	r 2 000	129	125	84	r 403	14	137	33
May	4 220	r 1 994	140	152	82	350	r 13	133	32
June	r 4 310	r 1 946	144	71	76	337	16	r 133	31
July r	4 350	1 979	140	96	66	443	13	144	30
August	4 637	1 849	129	82	75	361	12	130	31

(a) Figures shown are Customs value.

(b) Restrictions are placed on the release of statistics for certain commodities for reasons of confidentiality. The restrictions do not affect total export and import figures, but they can affect figures at State and commodity levels. More information on the treatment of confidential data in international merchandise trade statistics can be obtained from the Information Paper, *International Merchandise Trade Statistics, Australia: Data Confidentiality* (Cat. no. 5487.0), or the International Trade Confidentiality Manager on 02 6252 5409. Figures shown are Free On Board (FOB) values.

(c) Standard International Trade Classification Revision 3.

(d) Excludes re-exported goods.

Source: ABS data available on request, *International Trade database*.

FOR MORE INFORMATION...

- INTERNET** www.abs.gov.au the ABS web site is the best place to start for access to summary data from our latest publications, information about the ABS, advice about upcoming releases, our catalogue, and Australia Now—a statistical profile.
- LIBRARY** A range of ABS publications is available from public and tertiary libraries Australia-wide. Contact your nearest library to determine whether it has the ABS statistics you require, or visit our web site for a list of libraries.
- CPI INFOLINE** For current and historical Consumer Price Index data, call 1902 981 074 (call cost 77c per minute).
- DIAL-A-STATISTIC** For the latest figures for National Accounts, Balance of Payments, Labour Force, Average Weekly Earnings, Estimated Resident Population and the Consumer Price Index call 1900 986 400 (call cost 77c per minute).

INFORMATION SERVICE

Data which have been published and can be provided within five minutes are free of charge. Our information consultants can also help you to access the full range of ABS information—ABS user-pays services can be tailored to your needs, time frame and budget. Publications may be purchased. Specialists are on hand to help you with analytical or methodological advice.

- PHONE** **1300 135 070**
- EMAIL** **client.services@abs.gov.au**
- FAX** 1300 135 211
- POST** Client Services, ABS, GPO Box 796, Sydney 1041

WHY NOT SUBSCRIBE?

ABS subscription services provide regular, convenient and prompt deliveries of ABS publications and products as they are released. Email delivery of monthly and quarterly publications is available.

- PHONE** 1300 366 323
- EMAIL** subscriptions@abs.gov.au
- FAX** 03 9615 7848
- POST** Subscription Services, ABS, GPO Box 2796Y, Melbourne 3001



2130710011015
ISSN 1031-8534

RRP \$18.00